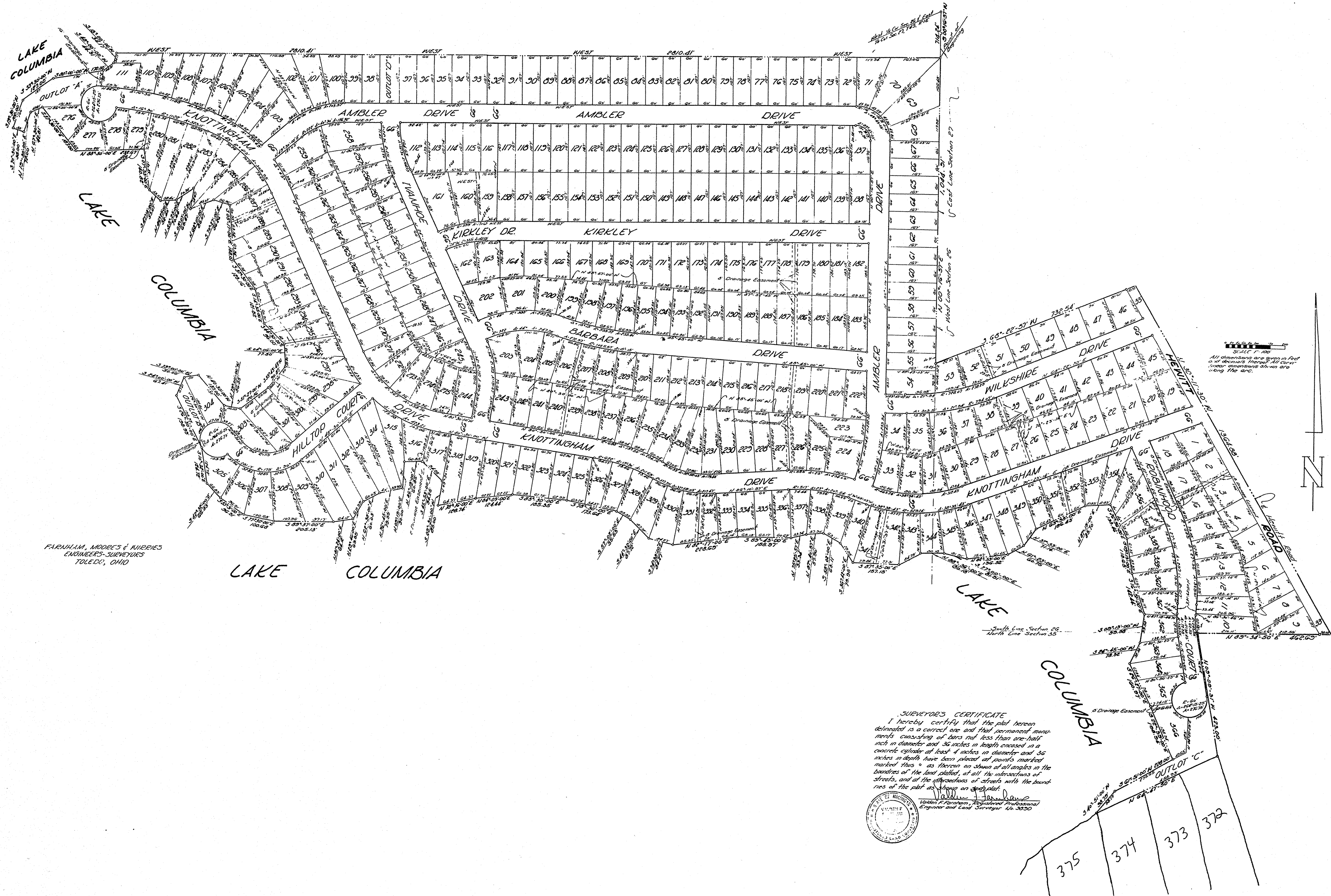


"SHERWOOD SHORES"

BEING A SUBDIVISION PART OF THE SOUTHWEST 1/4 OF SECTION 26, PART OF THE SOUTH 1/2 OF SECTION 27, AND PART OF THE NORTHWEST 1/4 OF SECTION 35, TOWN 4 SOUTH, RANGE 1 EAST, COLUMBIA TOWNSHIP, JACKSON COUNTY, MICHIGAN



FARNHAM, MOORE & JUBRIES
ENGINEERS-SURVEYORS
TOLEDO, OHIO

SURVEYOR'S CERTIFICATE
I hereby certify that the plot herein delineated is a correct one and that permanent monuments consisting of bars not less than one-half inch in diameter and 36 inches in length encased in a concrete cylinder at least 4 inches in diameter and 36 inches in depth have been placed and points marked marked thus ° as thereon on shown at all angles on the boundaries of the land plotted, at all the intersections of streets, and at the intersections of streets with the boundaries of the plot as shown on this plat.

Walter J. Farnham
Walter J. Farnham, Registered Professional Engineer and Land Surveyor No. 3050



375
374
373
372