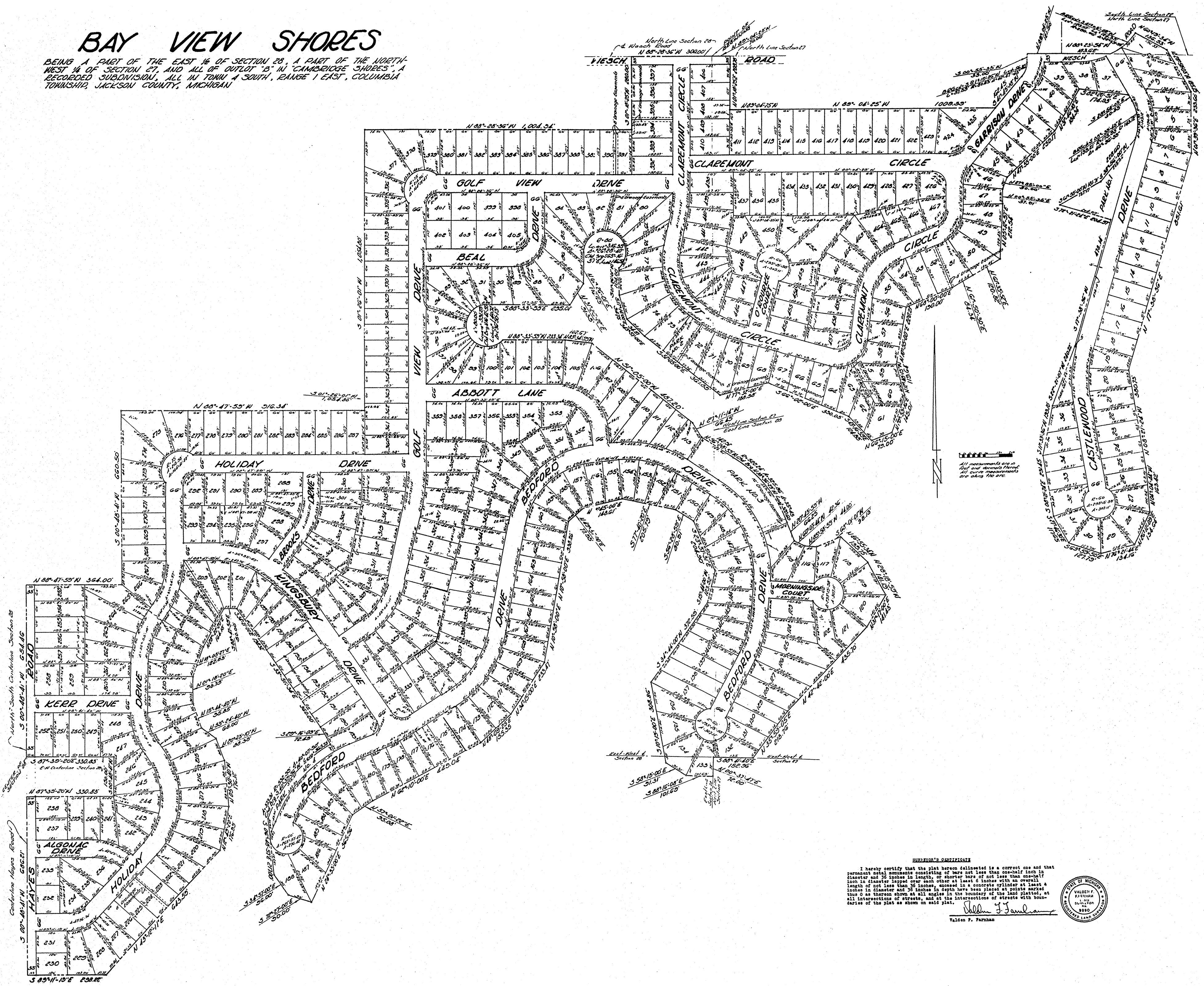


# BAY VIEW SHORES

BEING A PART OF THE EAST 1/4 OF SECTION 28, A PART OF THE NORTH WEST 1/4 OF SECTION 27, AND ALL OF OUTLOT 'B' IN 'CAMBRIDGE SHORES', A RECORDED SUBDIVISION, ALL IN TOWN 4 SOUTH, RANGE 1 EAST, COLUMBIA TOWNSHIP, JACKSON COUNTY, MICHIGAN



All measurements are in feet and decimals thereof. All curve measurements are along the arc.

**SURVEYOR'S CERTIFICATE**  
 I hereby certify that the plat hereon delineated is a correct one and that permanent metal monuments consisting of bars not less than one-half inch in diameter and 36 inches in length, or shorter bars of not less than one-half inch in diameter lapped over each other at least 6 inches with an overall length of not less than 36 inches, encased in a concrete cylinder at least 4 inches in diameter and 36 inches in depth have been placed at points marked thus O as shown hereon at all angles in the boundary of the land plat, at all intersections of streets, and at the intersections of streets with boundaries of the plat as shown on said plat.

Valden P. Farnham  
 Valden P. Farnham

