

# The Columbian

April 2009



Lake Columbia P.O.A.  
11281 Hewitt Rd., Brooklyn, MI 49230

Phone: (517) 592-2361

Fax:  
517-592-3710

Email:  
lcpoa@lakecolumbia.net

Website:  
www.lakecolumbia.net

Office Hours:  
M,W,Th,F 12:30 - 4:30  
Closed on Tuesday

## REMINDER NOTICE OF ANNUAL MEETING

The 45th Annual Meeting of the LAKE COLUMBIA PROPERTY OWNERS ASSOCIATION will be held on Sunday, May 3, 2009, 1:00 pm at the Columbia Central High School on Hewitt Rd., Brooklyn, MI in the LIBRARY.

The following members have been nominated to be elected Director for the following shores that are up for renewal at the annual meeting. Members must own property in each perspective shore in order to cast a vote or proxy. Only one vote per membership (*not per lot or per owner*) Proxies are available if you are unable to attend the annual meeting. Call, write or stop in the office to request your proxy. Proxy must be turned in to the Association office by **Tuesday, April 28** by midnight. Proxy must be returned by mail or in person.

### Riviera I, II

John Gosinski  
Al Moore

### Royal

Trish O'Shea

### Southern

Dennis Blain  
Pete Kolb  
Phillip Parisian

The amended Articles of Incorporation will be presented to the membership and voted on by the members. An affirmative vote of over 50% of a quorum is required per the Non-profit Corporation Act.

**To improve the effectiveness of our Association, we urge the attendance of all members eligible to vote. Please bring your most current MEMBERSHIP card.**

## REMINDER . . .

. . . that the date for the Community GARAGE SALE has been changed to **May 9**, 9:00am—5:pm

## 3 RAMPS SCHEDULED

Three ramps will be closed for repairs. One at a time will be repaired. The three ramps are Hawthorne (Waverly Ct.), Nottingham, Somerset. When each one is closed it will be inaccessible and a closed ramp sign will be posted. Each ramp will only take 1 to 2 days for repair. Repairs scheduled to begin April 7, weather permitting.

## LETTER FROM THE PRESIDENT

Dear Members;

In the March issue of "The Columbian" we informed you of the upcoming Annual Membership Meeting on May 3. I would like to again remind you that this year's meeting will be very important for you to attend and be informed on the state of your Lake Columbia Property Owners Association. As you know, the Board has been very busy with a number of important governance initiatives last year and will report to you the status. Also, you will have an opportunity to voice your concerns and opinions on LCPOA matters. So — mark your calendar and plan to attend the Annual Meeting and provide your support for the new 2009 Board.

See You There,

Al Hetke, Holiday II Shores

**We are asking for MEMBERSHIP PARTICIPATION** in order to achieve this task. If you have something that you would like to submit, please do...we are always looking for a good story, recipe, etc.

Please send all articles, recipes, etc. to the Association Office, along with your name in case we need to contact you. "We encourage you to get involved."

Our "NEW COLUMNS" consist of:

**DID YOU KNOW:** Interesting facts; either about Lake Columbia or its surrounding area, or questions you would like to know the answer to.

**REMEMBER WHEN:** A story, a memory, or an article about something in the past that you would like to share.

**KUDOS OR SHOUT OUT:** Bringing some attention or pride to one of Lake Columbia's members or family members.

**RECIPE:** A good recipe.

**SHORE HAPPENINGS:** Anything related to your shore coming together or celebrating together.

**WORD SEARCHES/CROSSWORD PUZZLES:** Self explanatory

**KIDS / TEENS KORNER:** Your voice also needs to be heard!.

**HELPFUL HINTS:** Just that...

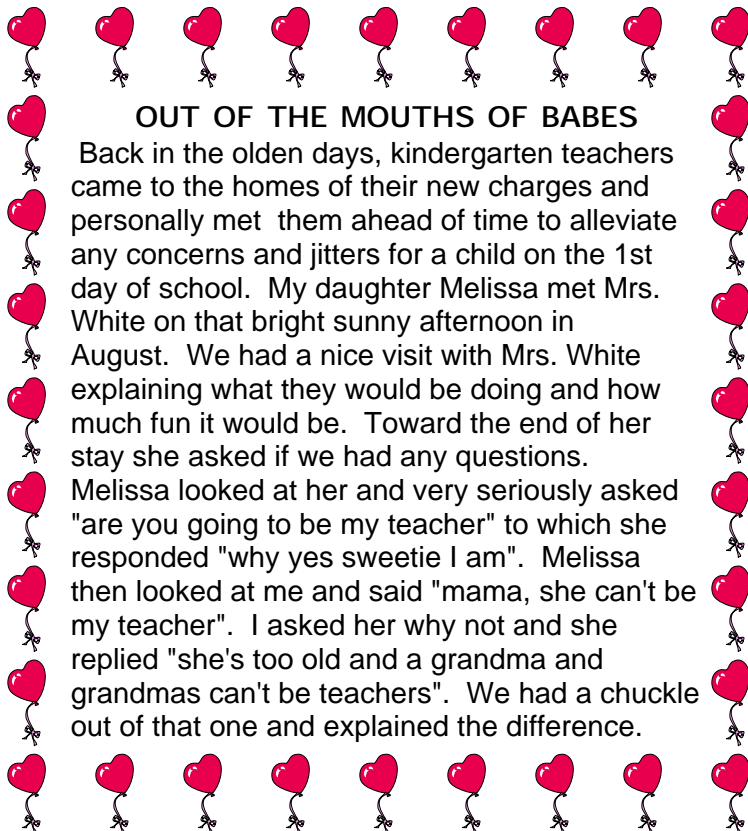
We hope to continue to print a paper that is not only informative but also one that will inspire you to read from cover to cover.

Depending on how many articles submitted we may not be able to print them all each month but they will be kept and submitted as space allows.

THANK YOU!!!

## REMEMBER WHEN:

## DID YOU KNOW:



### OUT OF THE MOUTHS OF BABES

Back in the olden days, kindergarten teachers came to the homes of their new charges and personally met them ahead of time to alleviate any concerns and jitters for a child on the 1st day of school. My daughter Melissa met Mrs. White on that bright sunny afternoon in August. We had a nice visit with Mrs. White explaining what they would be doing and how much fun it would be. Toward the end of her stay she asked if we had any questions. Melissa looked at her and very seriously asked "are you going to be my teacher" to which she responded "why yes sweetie I am". Melissa then looked at me and said "mama, she can't be my teacher". I asked her why not and she replied "she's too old and a grandma and grandmas can't be teachers". We had a chuckle out of that one and explained the difference.

**Lake Columbia's finances for the year ending  
February 28, 1967 was as follows: (32 years ago)**

<b>Membership Dues Income</b>	\$54,573.79
<b>Disbursements:</b>	
Wages	\$5,379.13
Payroll Taxes & Workmen's Compensation	806.88
Property Taxes	1,402.95
Office and Warehouse Rent	630.00
<b>Maintenance:</b>	
General	\$3,028.79
Equipment	756.13
Grounds	1,651.83
Patrol	6,771.54
Roads	60.00
Buildings	<u>28.68</u>
	\$12,296.97
<b>Land Acquisition</b>	\$1,200.00
Miscellaneous	942.48
Newsletter	105.33
<b>Management</b>	
Auditing, Insurance, Taxes	
Supervision and Overhead	<u>\$6,675.00</u>
	\$29,438.74
Excess Cash Receipts Over Disbursements	25,135.05
Cash Deficit at March 1, 1966	<u>14,646.35</u>
Cash Balance as of February 28, 1967	\$10,488.70



## RECIPE:

## HELPFUL HINTS:

This is a great and simple make ahead, tasty appetizer. It can be frozen for up to 3 months in containers with wax paper between layers.

### "SAUSAGE SQUARE APPETIZERS"

Submitted by Coleen Crampton

- 1 # Bob Evans hot sausage
- 1# ground chuck
- 1 # Velveeta cheese
- 12/ tsp. garlic salt
- 1/2 tsp. fennel seed
- 1/2 tsp. worchester sauce
- 1 tsp. oregano

Cook and chop sausage, drain and set aside.  
Cook ground chuck, drain and set aside.

In a kettle combine sausage, ground chuck, velveeta (cut in chunks) and spices. Cook on low heat until all cheese is melted into mixture.

Drop mixture generously onto triscuit crackers. Refrigerate or freeze.

Bake at 400 deg. for 15 minutes. If frozen, bake for 15 to 18 minutes.

Use coffee filters instead of paper towels to clean your windows for a lint free shine.

Stuffed up with a nasty cold... Apply Vicks VapoRub generously to the soles of your feet. Put on a pair of clean white socks and go to bed. You'll be unstuffed in the morning. Works great on toddlers also without irritating their little noses.

Feed your houseplants...cover peelings from fruits and vegetables with cold water. Soak overnight and strain. The water will contain vitamins and minerals to make your plants thrive.

Instead of putting sugar in a bowl for coffee or cereal put it in a salt shaker and label it. You can sprinkle it into your cup or bowl with no mess to clean up. Added benefit...you use less.

## WORD SEARCH / CROSSWORD PUZZLE:

### Desserts all around!

BANANASFOSTER  
BLONDIES  
BROWNIES  
CAKE  
CANDY  
CHOCOHOLICS  
COOKIES  
FONDUE  
FRUIT  
ICECREAM  
JELLO  
PUDDING

This word search will make you lick your lips!

Try to find **all 12** words on this Board.

B	L	O	N	D	I	E	S	S	Q	K	U	I
R	A	J	R	Q	P	O	C	C	Q	L	K	C
O	F	N	X	Y	D	B	I	I	X	M	S	E
W	J	R	A	Y	N	Q	X	L	Q	P	S	C
N	D	D	Y	N	D	Q	J	O	U	P	Y	R
I	T	N	E	X	A	N	A	H	C	L	D	E
E	M	K	K	F	B	S	A	O	P	N	V	A
S	Q	E	U	D	N	O	F	C	G	S	V	M
N	F	K	W	F	N	R	C	O	A	X	W	T
G	N	I	D	D	U	P	W	H	S	K	I	A
S	O	S	E	I	K	O	O	C	K	T	E	C
U	C	O	T	N	P	J	E	O	L	L	E	J
K	C	V	U	X	E	N	Z	T	J	Y	U	R

# Premiere Properties



FOR ALL OF YOUR PROPERTY NEEDS GIVE ME A CALL, OR VISIT MY WEBSITE.

[www.LakeColumbia.com](http://www.LakeColumbia.com)  
E-Mail: [Fran@FranSlat.com](mailto:Fran@FranSlat.com)  
Cell: 517-812-1657

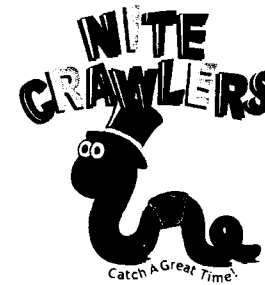
## WELCOME TO OUR ADVERTISERS!!!

If you would like to see your ad in our newsletter please contact:

Coleen Crampton at  
592-5863

or

Trish O'Shea at  
592-6567



CATCH A GREAT FISH DINNER AT NITE CRAWLERS

PHONE: (517) 591-1008  
FAX: (517) 591-1009

6158 JEFFERSON ROAD  
CLARKLAKE, MI 49134

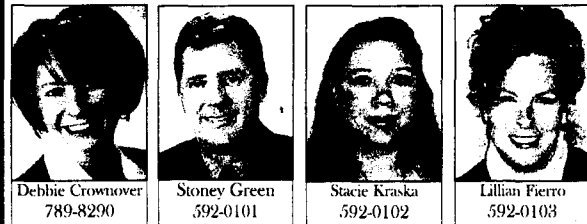
CHRIS BOWMAN

CHRIS BOWMAN

PONTOON HAULING

Home (517) 592-2910

Cell (517) 812-8034



Debbie Crowner  
789-8290

Stoney Green  
592-0101

Stacie Kraska  
592-0102

Lillian Fierro  
592-0103

# RFD M8 <: W M ti

~hl g n / .erook .l j n ~

131 N. Main • Brooklyn

(517) 592-0100

[www.midmichiganhomes.com](http://www.midmichiganhomes.com)

[brooklyn@midmichiganhomes.com](mailto:brooklyn@midmichiganhomes.com)

irn', o~eEl

Each office is independently owned and operated

Bayliner Boats  
Bennington Pontoons  
Crestliner Boats  
Sedona Pontoons  
South Wind Boats  
Mercury  
Yamaha Outboards

## THAYER MARINE, INC.

(517) 787-3000

[www.thayermarine.com](http://www.thayermarine.com)

Sales, Service and Storage of all Brands

5350 US 127 South • Jackson, MI 49201

### LILLIAN FIERRO

Office -517-592-0103 cell 517-944-5060

Lake Columbia Real Estate Specialist!

[WWW.LILLIANFIERRO.COM](http://WWW.LILLIANFIERRO.COM)



# RE/MAX

Brooklyn



## TERRAFIRMA LANDSCAPE SERVICES

\*Registered Landscape Architects

\*Landscape Construction

\*Irrigation Systems Installation, Maintenance

\*Basement Waterproofing & Drainage Systems

[www.terrafirmalandscape.net](http://www.terrafirmalandscape.net)

Toll Free  
866-789-3276

Eric Patterson  
734-434-3811

# TERRAFIRMA

Est. 1977

# 2009 Goose Round up Volunteers needed

We are planning for our 3rd year of goose round up. This is an on going project each year. A very small percentage if any of the geese collected last year are unlikely to return but new ones come in their place. It does take a few volunteers and their watercraft to be willing to meet at Hawthorne / Waverly Park 5:30am on Sunday, June 14. If you are interested in signing up please contact the office. Donuts, Coffee and Bagels are provided.

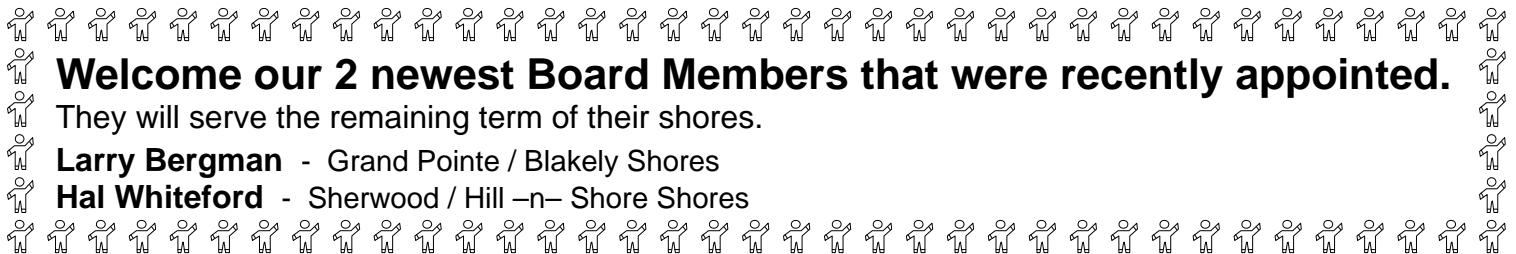
## DISPLAY OF WATERCRAFT & VEHICLE DECALS

This is a reminder to everyone to obtain their boat and vehicle decals from the Association Office and then to actually put them on your boats and vehicles. Don't just stick them in a drawer where they will be forgotten.

Why is it important to display our decals? It's purely a security issue. Use of the lake and parks is reserved for members in good standing. The decals alert our Security personnel that you have the right to launch your watercraft without being challenged. They also indicate to the other boaters or those using a park that you are a member in good standing and belong there. When the decal is not present, it raises suspicion that you are trespassing or are not in good standing as a member.

Our Security personnel have been instructed to prevent anyone without a watercraft decal from launching their watercraft. It will not be sufficient to show your membership card – you must have a decal on the watercraft. So please help us control access to our lake and parks by properly displaying your watercraft and vehicle decals.

## SHORE HAPPENINGS:

 **Welcome our 2 newest Board Members that were recently appointed.**  
They will serve the remaining term of their shores.  
**Larry Bergman** - Grand Pointe / Blakely Shores  
**Hal Whiteford** - Sherwood / Hill –n– Shore Shores

## KIDS / TEEN KORNER:

The sound of the dry firewood crackling in the metal fire pit is therapeutic and comforting. The buzz of my cousins laughter ringing through the yard brings a slow smile to my face. As I sit back in the prickly discolored lawn chair and gaze up at the pitch black star filled sky, I feel at home. The family cottage has been a place to escape from reality and forget about my problems. With one whiff of the waters crisp breeze, all of my troubles melt away. I couldn't bear to picture what my summer would be like if a visit to the summer cottage wasn't a part of it. In my opinion there's nothing more perfect than spending a gorgeous summer's day, sitting on the edge of the dock with my feet in the icy water, and laughing and talking with the people who love you most.

The Kolling cottage is located in Brooklyn, Michigan, about forty five minutes away from Ann Arbor. Brooklyn is a small picturesque town and although not many people know where Brooklyn is, it has a large claim to fame. It's the home of the Michigan International Speedway. The cottage is about 3 miles away from the racetrack so it's not uncommon to see the familiar blue and gold colored Goodyear blimp gliding over the lake on race weekends. The cottage is nestled between the grassy hills on beautiful Lake Columbia, one of the largest man made lakes in Michigan. It's where we spend our lingering days tubing, water skiing, sitting around lake night bonfires and taking boat rides.

One of my favorite things to do at the cottage is taking a long relaxing pontoon boat ride. There's nothing more calming to me than feeling the gentle waters breeze brush against my sun kissed skin, while listening to the jagged melody of a twangy country song playing lightly in the background. The pontoon is the boat everyone in the family enjoys. Whether it's driving the boat out to the middle of the lake and anchoring for a day of swimming, or taking a mid-night boat ride on the smooth moon lit water, the pontoon is something I will always remember, no matter how much time passes.

The most important part of the cottage is simple really. It's my family, and I come from a big one. When everyone is at the cottage, it becomes home to thirteen people. Okay I know what you're thinking, "How can all of those people spend long periods of time together in a house that small, without going crazy?" As crazy as it may sound, the cottage is much more fun when the entire family is there. Sure it's louder, crazier and there aren't enough bathrooms but we like spending time as the big crazy family we are. We are one of the many families separated by distance and the cottage is the one thing that brings us all back together. I will never get sick of the cottage. I have only grown to appreciate it more as time goes on. Summer is simply not summer without a trip to the cottage. No matter how old I get, the sight of the little white house on 113 Holiday Drive, will always tug at my heart strings.

Rachel Kolling - 16 years old



**P.O. Box 132**  
**Caledonia MI 49316**  
**Phone 616-891-1294**

## 2009 Tentative Treatment Dates

1. Please review the scheduled date(s) and types of treatment(s) listed below.
2. If weather conditions and/or Professional Lake Management feels treatment is not necessary, we will notify your lake board and reschedule treatment. On the day of treatment, your lake frontage will be posted if restrictive herbicides were used.

### Lake Columbia has been scheduled for the week of:

WEEK OF:	TYPE OF TREATMENT:	WEEK OF:	TYPE OF TREATMENT:
4/20/09	Sonar Treatment & Water Quality	9/1/09	Water Quality & AVAS Survey
5/4/09	Sonar Bump Treatment		
6/22/09	Optional Spot Treatment & E.coli		
7/20/09	Optional Spot Treatment		

The property owners in this area are planning to have the waters chemically treated to control lake weeds and/or algae. This notice is being circulated in accordance with Department of Environmental Quality (DEQ) procedures. A permit for the treatment has either been secured or will be secured from the DEQ before the work is begun.

We treat each lake according to a schedule or season plan, established with the cooperation of your lake association, lake board or residents on the lake. Due to the uncertainty of weather, the treatment schedule is approximate. Please watch your shoreline for the posting of the 11 x 14 inch, yellow, red or green signs. The signs will indicate the date of the treatment, the products used, and any restrictions on the use of treated water for swimming, watering lawns, etc.. One or more treatments involving water restrictive products may be applied. There may be spot treating of vegetation involving water restrictive products throughout the summer.

In the event that you see us spraying for algae control with copper based products, signs may be posted stating there is no restrictions. The purpose of this requirement by the DEQ is to let you know that we treated your waters and there are no restrictions. The signs used for algae treatments will be "Green" and the signs for restrictive products will be "Yellow" or "Red". Please be aware that only products approved by the State of Michigan and the Federal government are being used. We have experienced **no adverse effects on people, fish, wildlife or domestic pets since applying these products**. We anticipate using one or more of the products listed below. Please read the restrictions. Again, the restrictions that apply to the products actually used in a particular treatment will be found on the signs posted on the day of treatment.

When more than one product is used, the most strict, longest limits will be posted. These restrictions are designed to allow for the safe use of these products. Please do not encourage anyone to use the waters while these restrictions apply.  
**If you have any questions please contact us during office hours. (8:00 am 4:00 pm M-F)**

### The X indicates what product and restrictions may apply to your water body.

X	PRODUCT/ACTIVE INGREDIENT	RESTRICTION
X	Navigate, Aquakleen/ 2,4-D	24 -hour restriction on swimming Irrigation of lawns, grasses, and turf – NO RESTRICTION Irrigation of crop, non-crop, & ornamentals – indefinite unless assay indicates 100 ppb or less Potable water – indefinite unless assay indicates less than 70 ppb
X	Renovate 3, OTF/ Trichlopr	24 -hour restriction on swimming Irrigation of established lawns & grasses – NO RESTRICTION Irrigation of ornamentals, crops, and non-crops – 120 days or until assay indicates a non-detectable level
	Reward/ Diquat dibromide	24 -hour restriction on swimming 1 -day animal consumption of treated water 3 -day restriction of domestic water use and irrigation of turf & ornamentals 5 -day restriction on crop irrigation
	Hydrothol 191/ Dimethylalkylamine salt of Endothol Aquathol K/ Dipotassium salt of Endothol	24 -hour restriction on swimming 14 -day restriction for irrigation, agricultural sprays, & domestic purposes
X	Sonar A.S., Sonar P.R., Sonar S.R.P., Sonar Q, Avast/ Fluridone	24 -hour restriction on swimming 7 -day restriction on established tree crops 30 -day restrictions on irrigation of crops, turf, plants, seedbeds, or areas to be planted. <b>(Please refer to website for restriction updates)</b>
	Nautique/ copper carbonate Komeen/ copper as elemental	24 -hour swimming restriction
X	Shade/ water dye – tracer Copper Sulfate/ Pentahydrate Cutrine Plus-Ultra, Captain, Algimycin, Earthtec, Formula F-30/ copper as elemental Cygnat Plus/ D,1-limonene & alcohol ethoxylated fatty alcohol PolyAn/ anionic poly acrylamide polymer AquaPrep/ enzymes & non-ionic surfactants Nutrisorb/ gram negative, naturally occurring bacteria	NO RESTRICTIONS
	Green Clean Pro, Phycomydin/ sodium carbonate peroxyhydra	24 -hour swimming restriction
	Shade/ water dye – treatment	24 -hour swimming restriction
	Aquapro, Rodeo / Glyphosate	24 -hour swimming restriction

\*Certified Applicators: Lynn Benedict, Jason Broekstra, Audry Buist, Jaimee Conroy, BreAnn Grabill, Steve Hanson, Jake Hunt, Nate Karsten, Pat McLamara, Stephanie Mervau, Casey Mickelson, Lucas Slagel, Jeff Tolan, Andy Tomaszewski, Jacob Ware.



Lake Columbia

Property Owners Association

11281 Hewitt Road  
Brooklyn, MI 49230

Phone: 517-592-2361

E-mail: [lcpoa@frontiernet.net](mailto:lcpoa@frontiernet.net)

Fax: 517-592-3710

[www.lakecolumbia.net](http://www.lakecolumbia.net)



Scheduled for WEEK of April 20

# WEED TREATMENT NOTICE

Please review the below information, NOTICE INFORMATION, Treatment Dates and RESTRICTIONS on this notice.

When Sonar is applied it is applied to the entire lake. Unlike previous treatments where the herbicide is applied directly on the plants/area, Sonar is applied to the water. It disperses evenly in the lake and ALL milfoil plants are contacted (from the middle of the lake to the waters edge - much like the way you would treat a swimming pool). If property owners have milfoil in front of their beach and docks, they will certainly see an improvement. However, the results will not be as quick as you are used to, but the results will be longer lasting (1-3 years). We would recommend that property owners **DO NOT rake in the spring**. Sonar is taken in by the leaves of the Milfoil plant and moves to the root. If the plant (Milfoil) is raked, there is a reduced opportunity for the plant to take in the dose required for control. When using Sonar the Milfoil takes much longer to die off and to see results. We are hoping for complete control by July 4. This is due to that Sonar goes to the root to kill versus in years past the previous method killed within 10 days or so due to direct contact to the plant.

The plant (weed) that Sonar targets is Milfoil which is our major weed problem. Most other weeds are native plants and do not cause havoc. Native plants go through cycles in which certain ones can be more hindering one year than in others. In which this was the case last year for different types of native plants. The conditions were right for a heavier growth last year in certain native plants. This heavy growth was and is of no concern and is beneficial to our fish. In the following years some treatment may be done or slightly necessary to help keep the native plants under control. This would be assessed by the weed treatment company and their recommendations would be taken into advisement.

Treatment is scheduled for the week of April 20 and the spot or bump treatment the week of May 4 and both will be posted. It is important that all owners adhere to the information provided for the greatest possible results. Your patience, understanding and cooperation during this time is greatly appreciated.

**Please note the following IMPORTANT information:**

There is a **30 day restriction** on irrigation of lawns, plants seedbeds or area to be planted. **This restriction is the most crucial the first 7 to 10 days**. This time period is the most important for Sonar to be effective. Watering from the lake will hinder the weed killing process. Sonar is applied at 6 ppb concentration. However, the concentration decreases over time (quickly) and at 5 ppb, there is no restriction on watering. Usually, the concentration will be at 5 ppb within a week or so of treatment. After this period, the weed treatment company will keep the office posted as to when the ppb concentration has dropped accordingly.

**Algae Information:** LCPOA does not treat algae. There are two types of algae: planktonic and filamentous. Filamentous algae basically appear as clumps of floating "gunk". It can physically be picked up from the water. For this type of algae treatments can be effective. Planktonic algae is microscopic and consist of single cells. They do not form clumps but give the lake a green tinge when numbers get high enough. This type of algae is found in the entire water column and treatments are not effective. It is simply not feasible or permitted to treat the entire area of the lake. Planktonic algae is the dominate algae type on Lake Columbia and treatment would do little.